

## AccuVap FLX™ & AccuPrep MPS™ Tri-Mode System

### Specifications:

#### Heating/Concentration

- Enclosed evaporation chamber
- No heated oil bath
- Three heating zones with user defined heating rate and vacuum settings for each zone
- Vacuum control from 150-760 torr
- Two endpoint settings: dryness or defined endpoint volume (1-5 mL)

#### Transfer/Additions

- Manages use of up to three solvents for sample exchange, final solvent and rinsing
- Syringe precision: <0.1% typ.
- Add a pre-evaporation spike
- Add a keeper solution
- Reconstitute sample in choice of three solvents
- Perform up to two solvent exchanges with user defined heat and vacuum
- Up to two rinses with user defined heat rate and solvent addition time

#### Control

- Windows-based PC software
- Two operation modes:  
  GPC Only  
  GPC with Evaporation

#### Trays

- Up to 72 samples per sequence
- Sample from 16x100 mm vials
- Collect into GC Vials or 16x100 mm vials
- Specialty trays available upon request

#### Options

- Solvent Recovery Module
- Internal Temperature Probe



Adding the AccuVap FLX™ Evaporation System lets you choose from two evaporation modes: Evaporation Only or GPC Cleanup with Inline Concentration.

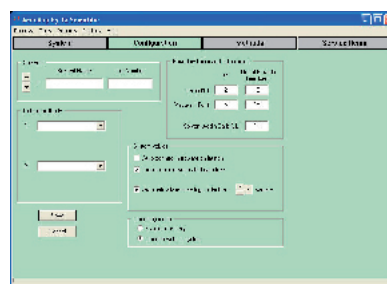
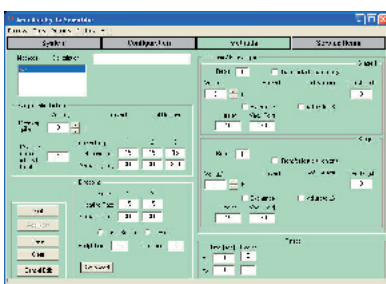
**Evaporation Only** mode concentrates a large volume of solvent after accelerated solvent and soxhlet extraction or concentrate a few milliliters of sample after SPE cleanup, replacing more manual evaporation methods like Kuderna-Danish and rotary evaporation.

In **GPC with Inline Evaporation** Mode, the AccuVap FLX™ concentrates the GPC Collect fraction(s) as it elutes from the column. **GPC Only** Mode lets you perform traditional GPC Cleanup and collect directly into the flask of your choice.

Unlike other semi-automated evaporation systems, the AccuVap FLX™ will automatically solvent exchange and quantitatively transfer your sample. Whether you have more preparative steps to perform or are ready for analysis, the AccuVap FLX™ concentrates your sample to the volume you choose and transfer into the vial specified.

Don't limit the use of your AccuVap...make it FLXible!

- Two endpoint choices: dryness or adjustable endpoint (1-5mL)
- Precise heating control to protect sensitive analytes
- Automatically solvent exchange sample to solvent of choice
- Transfer concentrated sample into GC vial or other storage vial
- Two adjustable level sensors monitor sample volume at all times and signal when target volume is reached
- Heated rinse cycle with choice of solvent ensures no carry-over from sample to sample



Comprehensive Method parameters give the ultimate control.

One click software change from Inline to Offline concentration modes.